

New etch line installed

MMAB Swedish factory recently installed a new SES-line, which means improved quality, capability and increased throughput.

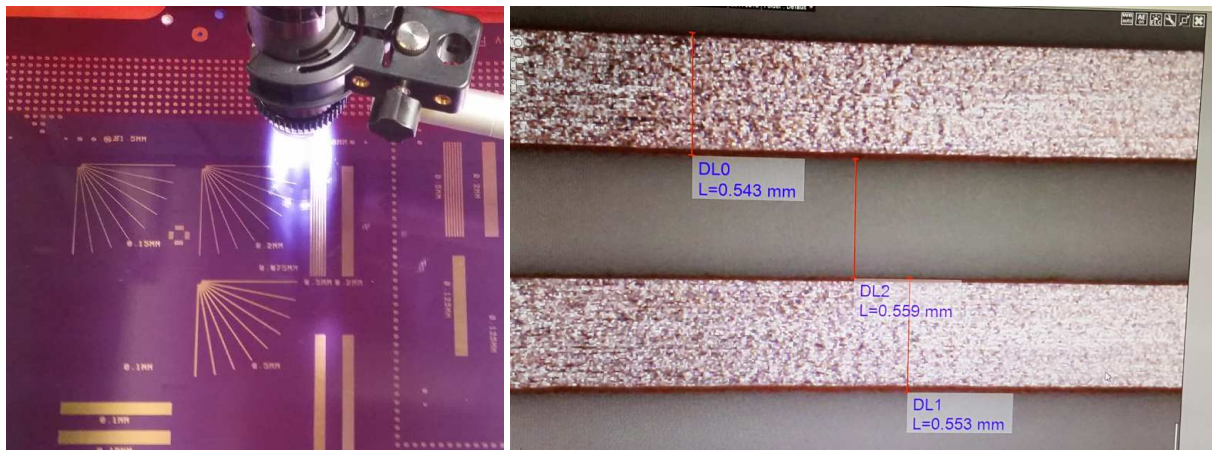


The SES-line (Strip-Etch-Strip) was successfully assembled during the summer. Besides the actual modules for rinsing, resist strip, etch chamber and tin strip, the assembly involved a very larger number of conveyors, pumps, electricity, pipings, sensors, scrubbers and ventilation. Even though the large process line required many man hours and complicated assembly there was no major issue once started and filled with liquids. The installation was followed by chemistry set-up and parameter adjustment by MacDermid.

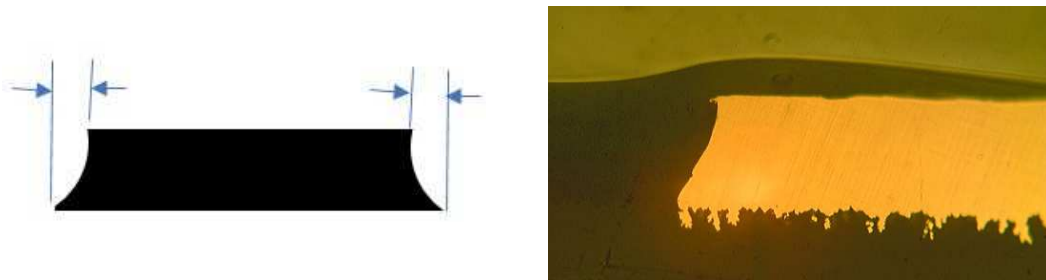
The etch results was then verified after adjustments, read more on next page.



The etch result was verified by measurements of specially designed test patterns, to be able to map our gap and track capability at 18, 35, 70 and 105 μm copper thickness. Microsections was conducted as well to evaluate the underetch.



Any wet etching process results in underetch, which means that the etching liquid removes some of the copper on the sides of the tracks. By optimizing the chemistry, temperature, pH, pressure and conveyor speed, the underetch can be minimized. Track width is measured at the bottom of the track



UL-approval for new material

Our UL-file E102144 already contains of a wide range of different base material from Isola, Grace and Arlon. We have now extended our UL-approval for new FR-4 base materials, Shengyi S1000H (mid Tg) and S1141 (standard Tg). Shengyi FR-4 material are widely used by our suppliers in China and recognized as one of the top brands, so there are several advantages using this material in our Swedish factory as well.

More information about our products can be found at www.mmab-pcb.com

MMAB Group, Sweden +46 40 64 24 600, sales@mmab-pcb.se

Hungary +36 30 658 22 60, sales.hungary@mmab-pcb.com

Czech Republic +420 601 151 377, sales.czech@mmab-pcb.com